

## SIRIUS W L2



**Product Name:** Sirius W L2

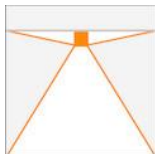
**Product Code:** SRS-W-L2-67213

**Environment:** Indoor

**Usage Area:** Office, Hotel, Store, Corridor etc.

**Category:** Spot Lighting

**Mounting Type:** Recessed



- **OSA Lighting Technique** offers indoor and outdoor lighting applications with different solutions in color and size in local production.

- High efficiency, long life LED. High color rendering index.

- LED spots, which have the feature of being long-lasting, also bring savings with them.

- Rectangular recessed multi-downlight made of die cast aluminium: equipped with two individually selected customised optics.

## SIRIUS W L2



**Housing:** Die Cast Aluminum

**Body Colour:** Ral 9010

**Light Source:** Led/Lamp OSRAM

**Operating Temperature:** -20 to 40

**Distribution:** Direct/Indirect

**Warranty:** 2 years

**Diffuser:** Reflector(PMMA)

**Driver:** Electronic

**Product Type:**

- 01

**Dimensions (mm):**

- 101,94mm x 49,5mm
- **Cutting:** 91mmx56,8mm

**Watt (W):**

- 8 W

**Input Volt:**

- 180-240Volt

**Beam Angle:**

- 15°
- 24°
- 36°
- ww°
- 30° \*75°

**Driver Options:**

- Dali

## SIRIUS W L2



**Lumen/watt:** 125lm/W

- 1160lm

**CRI:**

- >80 CRI

**Color Temperature:**

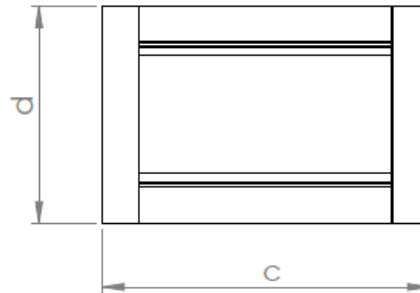
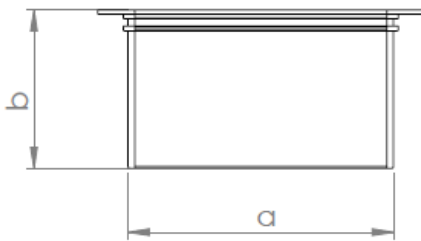
- 2700-6500Kl

**Warranty:**

- 5 Year

**IP Protection:**

- IP 44



Width(a)	83mm
Height(b)	49,5mm
Frame length(c)	101,94mm
Frame weight(d)	67,74mm
Cutting size	91mmx56,8mm